

Designing Functional Interiors

Chapter 7

Homes are designed from the inside out.

- Architects think about how a home will be used, carefully considering the needs and lifestyle of the occupants, the number and types of rooms, their sizes and shapes and how they should be arranged.

Result is a **floor plan**.

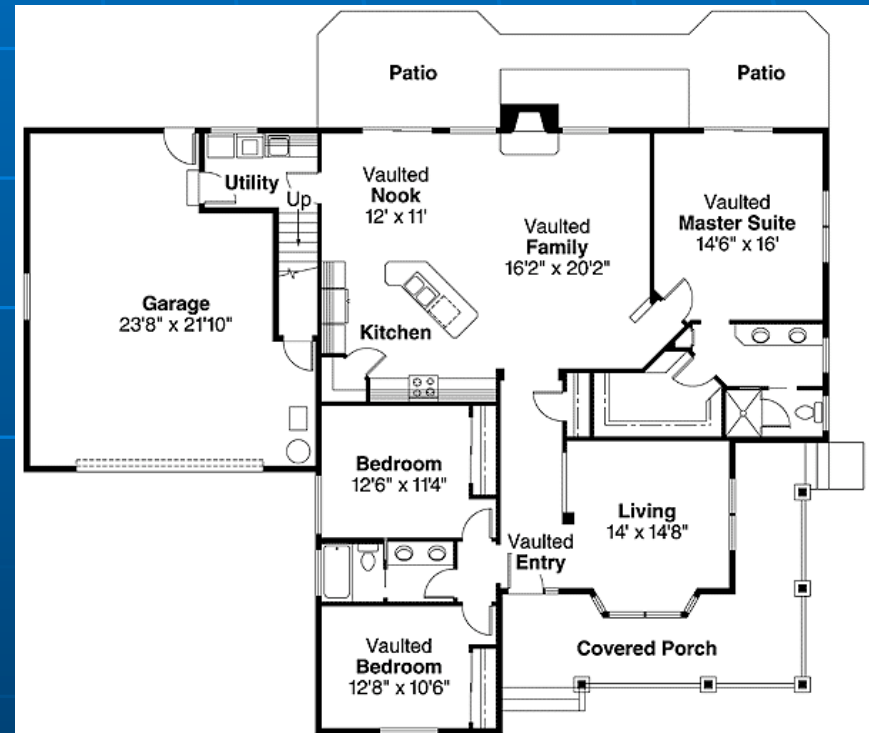
- A diagram of a home or other structure that shows the arrangement of rooms.
- Homes can be as varied as the people who live in them.
- Well-designed floor plans have some characteristics in common.
- Today's homes fulfill many functions in a limited space. Several activities may be going on in the same area.

Well defined homes divide space into zones.

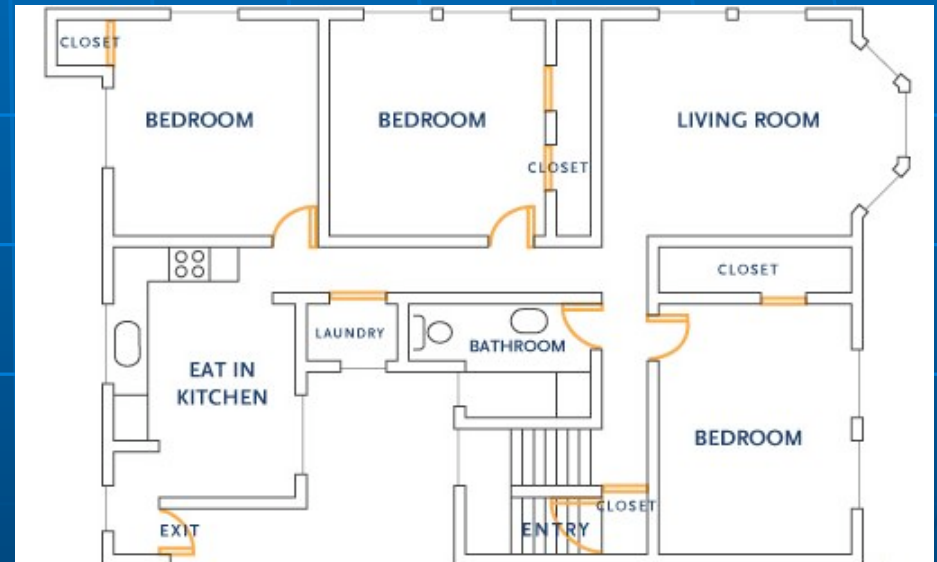
- **Private Zone:** Provides quiet, comfortable areas for sleeping and relaxing as well as privacy for bathing and dressing. Typically bedrooms and bathrooms.
- **Service Zone:** Where household work is done. Includes the kitchen, laundry room and workshop or garage.
- **Social Zone:** Part of the home used for activities and entertainment, such as the living, dining, family and recreation rooms, patios, decks and other outdoor living spaces.

Two types of floor plans: Open and Closed

- **Open Floor plan-**
few dividing walls
separate rooms
- Ex. Kitchen, Family
and Breakfast area

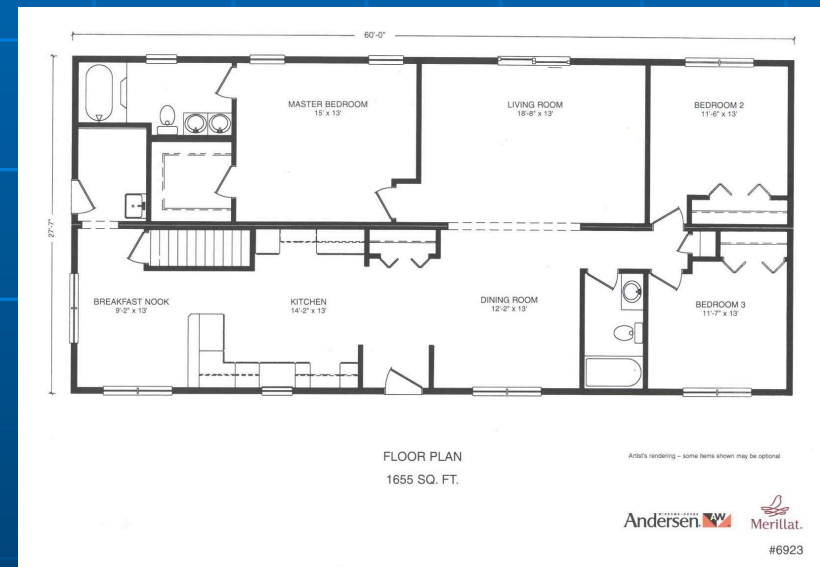


- **Closed Floor Plan**- rooms are separated and self contained like in Victorian homes.



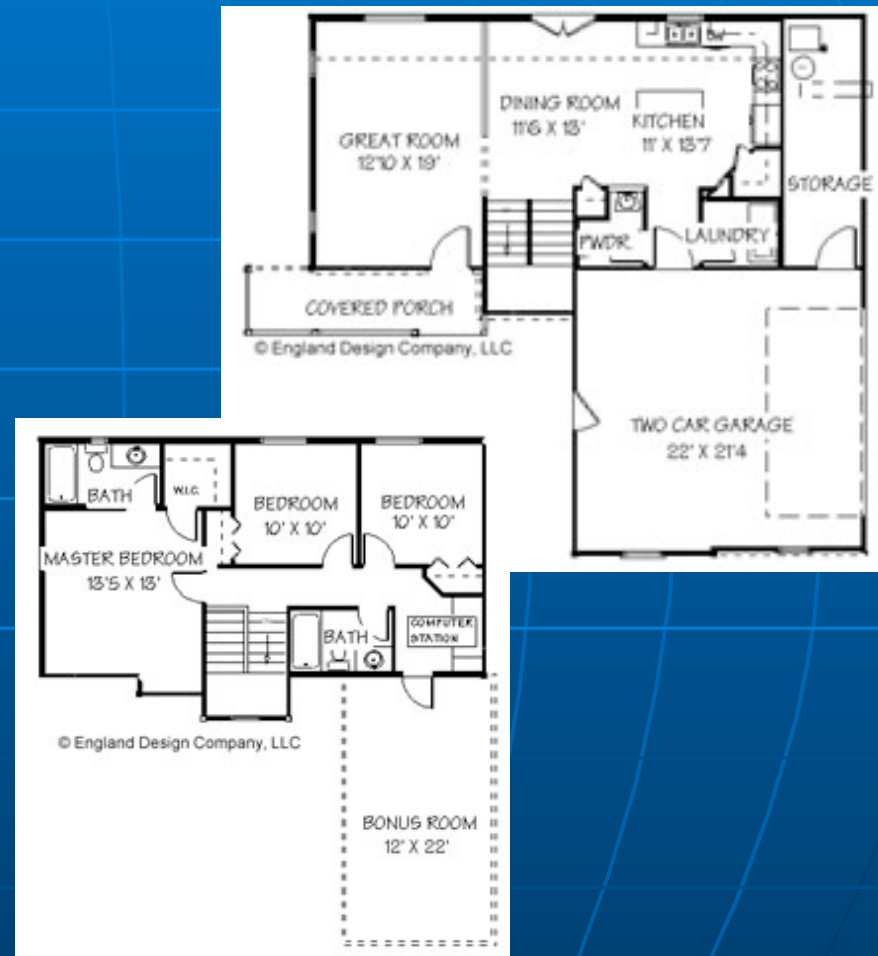
Floor Plans

- **One-level home-** Home is all on one level.
 - All parts of the living area are easily accessible without going up and down stairs.
 - Eliminating stairways increases the usable space.
 - Direct access to outdoors from all rooms.
 - Exterior maintenance is easier.
 - More of a universal design possibility.
 - Can be a problem in areas where there is a lack of space, increases cost of the lot, foundation, and roof construction.
- Ex. Ranch, Apartment, most manufactured homes



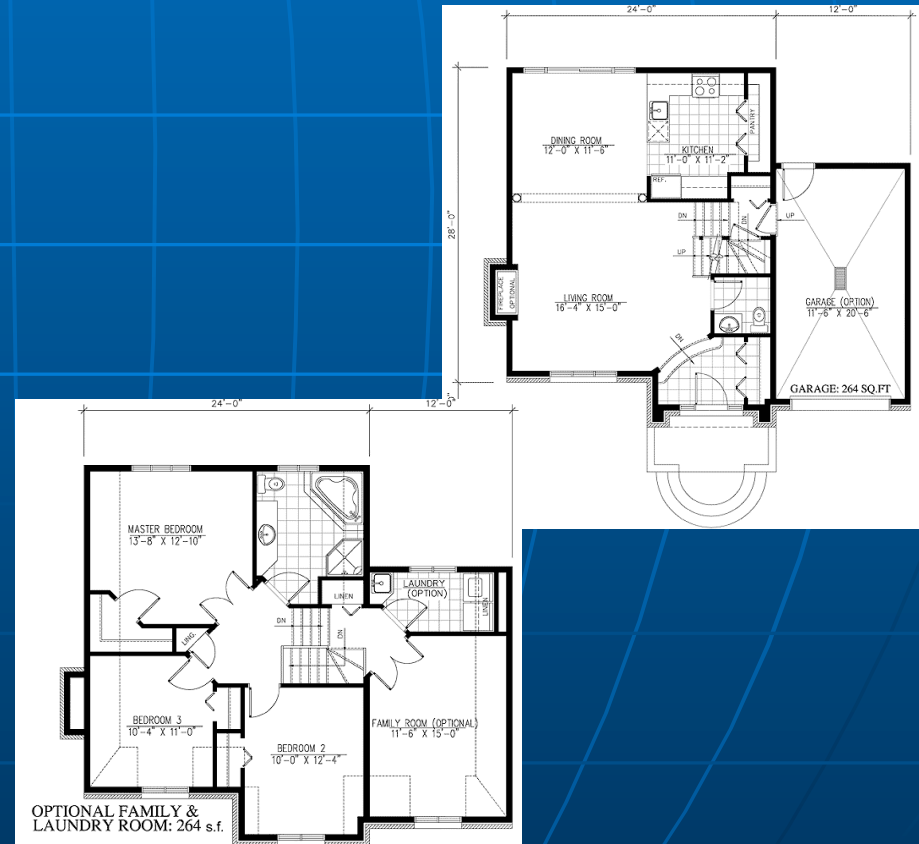
Two-Level Home

- Two levels of living space.
- Social and service zones on the first floor with the bedrooms on the second floor.
- Popular option because it maintains privacy.
- Does not adhere to a universal approach.



Split-Level Home

- Has three or more levels of living space, each separated by a short flight of stairs.
- The design uses space very efficiently.
- Typically, the entrance, living room, dining area, and kitchen are at ground level with the bedrooms a short flight above.
- A garage, laundry room, family room, utility area, and possibly a bed and bath may be a short flight below the main level.
- Allows for good separation between zones with few steps between levels.



Split-Entry Home

- Two levels of living space, with the lower level partially below ground.
- Named because the entrance is halfway between the two levels.
- Entry is into a foyer where you must either go up or down a short flight of stairs.
- Upper levels contains the living room, kitchen, dining room, and bedrooms, while the lower level contains the laundry room, utility area, family room, and possibly a bed and bath.
- No part of the home is accessible to someone who cannot climb stairs

